

SECTION 2: Kero-Sun and Similar Brands

Parts Available For:				Parts Available For:			
<u>BANDO</u>	BK96	BK195		<u>KOGY:</u>	100	200A	500
<u>COMMANDER:</u>	Com96	Com100		<u>NORTHSTAR:</u>	KSA105	KSA851	RB-2
<u>COSY:</u>	100	200		<u>NORTHERN LIGHT:</u>	RB-2		
<u>EASY</u>	2220	4570		<u>PORTA-HEAT:</u>	SYK1000	SYK2000	
<u>ENERGY STAR:</u>	EKS198C			<u>PROSPERITY:</u>	HT-01	HT-02	
<u>ENVIROTEMP:</u>	30494	30495	30497	<u>SAMARITAN:</u>	S8200	S8700	S13000
	30498	30499			S19500	SRT9600	
<u>HEATBUSTER:</u>	HB1950			<u>SEARS:</u>	SC-150	SC-150B	SC-200
<u>HENRY ISLAND:</u>	RB-2			<u>SUNSTAR:</u>	BK195		
<u>KERO SOLAR:</u>	KMI-80	KMI-81	KMI-82	<u>TOYOSET (By Kero-Sun):</u>			
<u>KERO-SUN</u>	Director (DIR)				O-200	O-230	R-96
	Moonlighter (ML)				R-100	R-101	R-110
	Moonlighter-H (ML-H)				R-111		
	Model K (MdlK)			<u>TOYOSTOVE:</u>	DC-80	DC-100	DR-86
	Sunstream				DR-86F	KRS-105	KSA-85
	Sunstream-2 (SS-2)				KSA-105	KSA-120	RB-2
	DC-90	O-15	O-85		RCA-36	RCA-36F	RCA-87
	O105	O-120	R-8		RSA-8	RSA-10	TSC-15
	R-10	R-22	R-36		WC-105	WC-120	WC105R
	R-40				SO-230	LR350	LR450

If you service Toyostove®/Toyotomi® Wickless Heaters, please note that the following items are available:

<u>Description</u>	<u>Part #</u>	<u>OEM#</u>	<u>Fits Models</u>
Air Filter w/case	04-7501	20474610	LR-450
Air Filter w/case	04-7503	20455210	LCB-30
Air Filter Sponge	04-7504	20474540	LR-350, LCR-3, LC-3B, LCR-6
Burner Mat	04-7403	20475813	FF-71, Laser 72
Circuit Board	04-7310	20475472	LR-450
Ignitor	04-7111	20474518	LR-350
Secondary Flame Rod	04-7601	20474571	LR-360, LCR-3B, LC-300
Primary Flame Rod	04-7602	20474011	LR-350, LCR-3, LCR-3B, LC-300, LCB-30, FFA-3A
Secondary Flame Rod	04-7606	20474671	LR-450

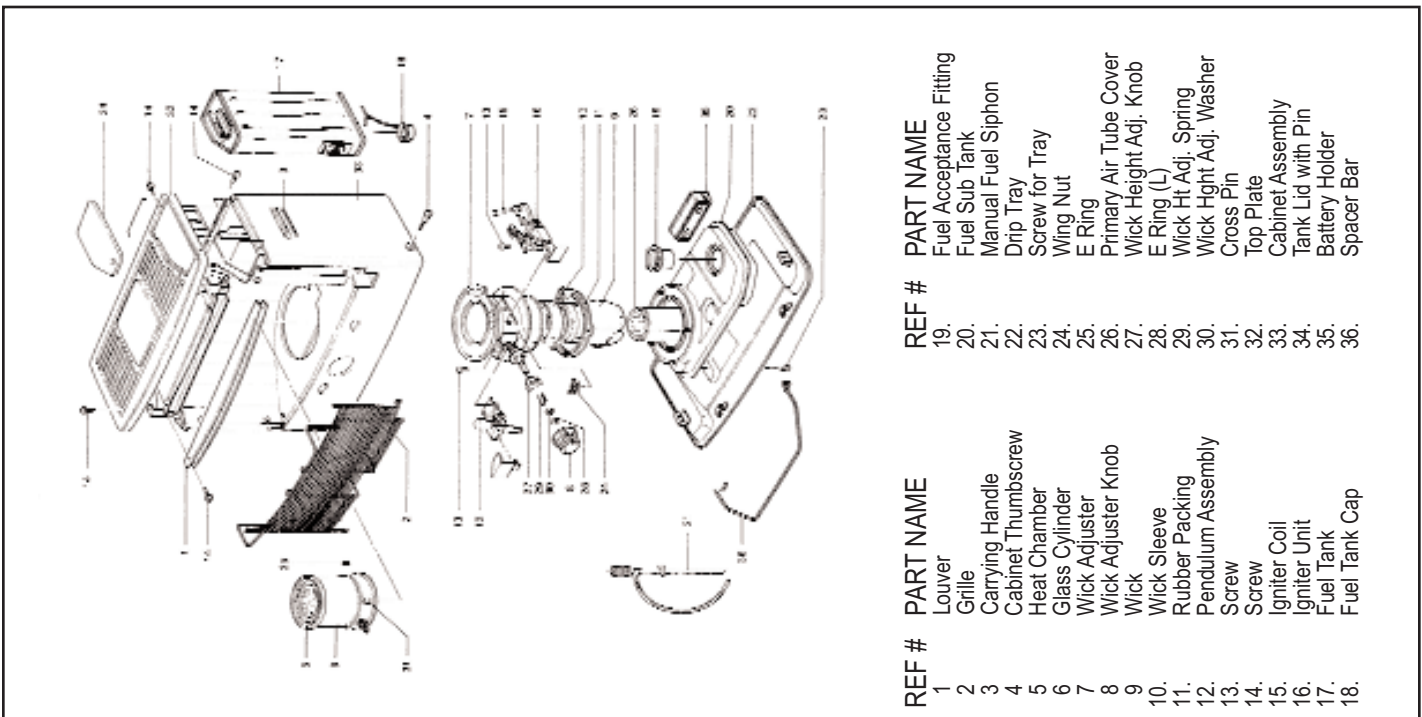
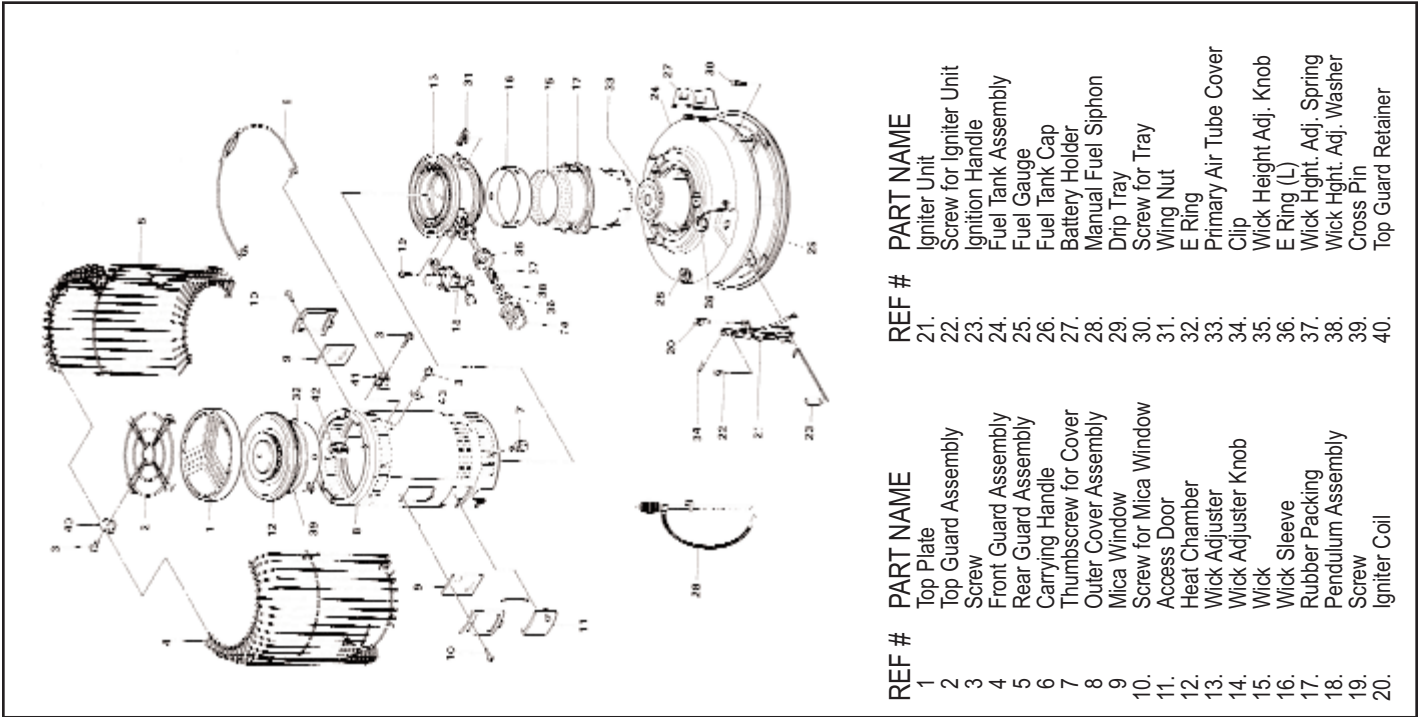
OEM Numbers are for reference only. Toyostove is a registered trademark of Toyotomi America.

Please refer to owners manual before attempting any repair or service.

IF YOU DO NOT LOCATE YOUR HEATER MODEL OR PART - PLEASE CALL FOR ADDITIONAL ASSISTANCE.
TO PLACE AN ORDER - 1-800-233-3202 • TECHNICAL SERVICE - 1-814-643-2299 Page 7

SECTION 2: Kero-Sun and Similar Brands

Typical Convection and Radiant Heater



IF YOU DO NOT LOCATE YOUR HEATER MODEL OR PART - PLEASE CALL FOR ADDITIONAL ASSISTANCE.

SECTION 2: Kero-Sun and Similar Brands

Ext. Assembly cont'd		Fuel Gauge cont'd		Fuel Tank Cap cont'd	
MODEL #	PART #	MODEL #	PART #	MODEL #	PART #
RSA-8, RSA-10	04-3093	O-230	04-4802	R-8,R-10,RSA-8,RSA-10	04-4301
S1950, SK-20	NLA- 04-3050	R-8, R-10(H-K), R-96	04-4803	R-36(A,B) (Pin thru cap)	04-4202
S8700	04-3098	R-10(PRE H), RB-2	04-4802	R-36(C-G), 40, 100, 101	04-4201
S13000	04-3099	R-22	04-4801	RB(B,C), RB-2, TSC-15	04-4301
SRT9600, Sunstream	04-3093	RC-11, RSA-8,10, S8200	04-4803	RC-37,37F, RC-41,41F	04-4201
SYK-10, SYK10000	04-3093	SC-150, SC-150B	04-4806	RCA-36, 36F, 87	04-4201
TSC-15	04-3098	SC-200	04-4801	RF-110, RF-111	04-4201
Extinguisher Reset Lever		SO-230, S8700	04-4802	SC-150B, SC-200,200B	04-4301
2220, BK-96	04-3205	SRT9600, SYK-10	04-4803	SO-230	04-4301
Com96, HT-01	04-3205	SYK-20	04-4806	SS-2, Sunstream	04-4201
ML, O-15	04-3206	TSC-15	04-4802	WC-105, WC-120,120R	04-4301
R-8, R-10, R-96, R36	04-3205	WC-105	04-4801	Glass Cylinder	
R-22	04-3205	WC-105R(E-F), 200A	04-4802	2220, CM100	04-0502
RC-11(B,C)	04-3205	WC-120, WC-120R	04-4804	35021	04-0513
RC-37, RC-37F	04-3205	Fuel Sub Tank		35102	lower 04-0514
RCA-36, RCA-36F	04-3205	100, 4570, BK195	04-4729	35135 NLA-	upper 04-0508
RF-110	04-3205	DIR(Pre-A only)	04-4723	35135	lower 04-0514
SKY10000, SRT9600	04-3205	EKS198C, HB1950	04-4729	35175,37175	upper 04-0506
Sunstream	04-3205	KMI-82, KSA-85, 851	04-4719	35175,37175	lower 04-0507
		KSA105	04-4729	DC-60	upper 04-0510
Fuel Gauge		ML(Pre-E), O-15(PRE A)	04-4701	DC-60	lower 04-0511
BK-195, DC-60, DC-80	04-4806	ML(E-G), O-15(A-C)	04-4702	DC-80 NLA-	upper 04-0508
DC-90, DC-100, 35175	04-4801	O-85(C-G)	04-4719	DC-80	lower 04-0514
DIR	04-4805	O-105(A-I)	04-4729	DC-90, DC-100	upper 04-0506
HT-01, KMI-80	04-4802	R-8	04-4712	DC-90, DC-100	lower 04-0507
HT-02, KMI-81	04-4803	R-10(G-J)	04-4716	DIR (PRE-A)	04-0504
KSA-85, 851, KRA-105	04-4801	R-10(K-M)	04-4750	DIR (A,B)	04-0505
KSA-105	04-4806	R-22	04-4725	DR-86, 86F	upper 04-0510
KSA-120	04-4804	R-36(C-G), R-100	04-4728	DR-86, 86F	lower 04-0511
ML, O-15, O-85(PRE C)	04-4802	R-40, SSII, R-101	04-4740	HT-02, KMI-81 (ENTIRE BURNER)	04-0502
O-85(C-H)	04-4801	RB-2, TSC-15	04-4702	KRA-105	upper 04-0506
O-85(I), O-105(F-I)	04-4806	RC-11(B,C)	04-4750	KRA-105	lower 04-0507
O-105(PRE F, M, N)	04-4802	RC-37, RC-37F	04-4728	ML	04-0512
O-105(J-L), O-200	04-4801	RCA-36, RCA-36F	04-4728	R-8	04-0503
O-120	04-4804	RSA-8, S8200	04-4712	R-10(PREN), R-36(ENT. BURNER)	04-0502
		RSA-10	04-4716	R-10 (N), R-40, R-101	04-0513
		Sunstream	04-4728	R-96, R-100 (ENTIRE BURNER)	04-0502
		Fuel Tank Cap		RB (B,C), RB2	04-0512
		500, CM-100	04-4201	RC-11(PRE D) (ENTIRE BURNER)	04-0502
		DC-60, 80, 90, 100	04-4301	RC-11 (D,E)	04-0513
		DR-86, DR-86F	04-4201	RCA-36,36F, RC-37,37F	04-0502
		KRA-105	04-4301	RC-41, RC-41F	04-0513
		KSA-85, 105, 120	04-4301	RF-110, RSA-10 (ENT. BURNER)	04-0502
		ML, O-15, O-85	04-4301	RF-111	04-0513
		O-105, 120, 200	04-4301	RSA-8, S8200	04-0503
				SC-150, 150B NLA-upper	04-0508

"While we, at World Marketing have made every effort to insure accuracy, we assume no responsibility for errors, omissions and/or damage therein caused."

IF YOU DO NOT LOCATE YOUR HEATER MODEL OR PART - PLEASE CALL FOR ADDITIONAL ASSISTANCE.

Page 10 TO PLACE AN ORDER - 1-800-233-3202 • TECHNICAL SERVICE - 1-814-643-2299

www.worldmktng.com info@worldmktng.com

3/08

SECTION 2: Kero-Sun and Similar Brands

Glass Cylinder cont'd			Heat Chamber cont'd			Igniter Unit cont'd		
MODEL #		PART #	MODEL #		PART #	MODEL #		PART #
SC-150, 150B	lower	04-0514	R-22		04-0110	O-15(PRE A) (9"Wire)		04-2019
SC-200, 200B	upper	04-0506	RC-11(B,C), RC-37		04-0107	O-15(A-C) (14"Wire)		04-2018
SC-200, 200B	lower	04-0507	RCA-36,RCA-36F,RF110		04-0107	O-85(PRE D)		04-2013
SR-400, SS2		04-0513	RSA-10		04-0107	O-85 (D-H), KSA851		04-2014
SRT9600, Sunstream		04-0502	S8200		04-0108	O-85(I), O-105(J-L)		04-2002
SYK10,SYK10000(ENT. BURN.)		04-0502	S19500		04-0115	O-105 (PRE E)		04-2015
Grill Guard			SC200, SC200B		04-0111	O-105 (E-I), KSA105		04-2016
DIR		04-5409	SO-230		04-0117	O-120, KSA120		04-2004
DIR (A,B)		04-5403	Sunstream		04-0107	O-200, 35135, 35175		04-2002
ML		04-5408	SYK-20, SYK2000		04-0115	R-8, RSA-8, S8200		04-2007
O-105(M,N), O-120 top		04-5415	WC-105, WC-105(C,D)		04-0116	R-10(PRE D), R-96		04-2008
O-230 top		04-5415	WC-105R(E,F)		04-0117	R-10(D-L)		04-2009
R-8		04-5404	WC-120, WC-120R		04-0102	R-22		04-2005
R-10(K-M), RC-11 (B,C)		04-5411	Ignitor Knob / Lever			R-36(PRE B)		04-2011
R-10(PRE N)		04-5401	100, 4570, BK-195		04-2306	R-36(B-G), R-100, RF110		04-2012
R-22		04-5407	500		04-2301	RB(B,C)		04-2021
R-36, RCA-36		04-5405	35135,35175,DC-90(A-C)		04-2302	RB-2 (14"Wire)		04-2018
RC-41F		04-5410	DIR		04-2308	RCA-36, RC-37, RC-37F		04-2012
RCA-36F		04-5406	DR-86, DR-86F		04-2303	RCA-36F		04-2010
RF-111		04-5410	EKS198C, H1950		04-2306	RSA-10, SRT9600		04-2008
RSA-8, S8200		04-5404	KRA-105		04-2302	RSA-850		04-2001
SO-230 top		04-5415	KSA-85, 851, 105		04-2306	S19500		04-2016
SS-2		04-5410	KSA120, O-150(J-L)		04-2307	SC-150, SC-150B		04-2002
Sunstream		04-5406	O-85(c)		04-2305	SC-200, SC-200B		04-2002
WC-105(E,F) top		04-5415	O-85(D-H), O-105(D-I)		04-2306	Sunstream (PRE A)		04-2010
Heat Chamber			O-120(A-C)		04-2309	Sunstream (A-C)		04-2012
100, 4570, BK-195		04-0115	O-200		04-2307	SYK-10, SYK10000		04-2008
2220		04-0107	RCA-87		04-2301	SYK20, SYK20000		04-2016
BK-96, CM100, Com96		04-0107	S13000, S19500		04-2306	TSC-15 (14" wire)		04-2018
DC-90, DC-100		04-0111	SC-200, SC-200B		04-2302	WC-105 (A,B)		04-2004
DIR		04-0103	SYK-20, SYK2000		04-2306	WC-105R(C,D)		04-2002
EKS198C, HB1950		04-0115	WC-105, WC-105R(C,D)		04-2307	WC-120, WC-120R		04-2004
HT-02, KMI-81		04-0107	WC-120		04-2307	Pendulum Assembly		
KRA-105		04-0111	WC-120R		04-2309	100, 4570, BK-195		04-3004
KSA-85, KSA-851		04-0114	Igniter Unit			500		04-3001
KSA-105		04-0115	4570, BK-195		04-2016	35102		04-3006
KSA-120		04-0102	BK-96, Com96, 2220		04-2008	35135, DC-60, DC-80		04-3002
O-85(A-H)		04-0114	DC-60, 80, 90, 100		04-2002	DC-90(A-C), DC-100		04-3005
O-105(A-I)		04-0115	DIR		04-2006	HB1950, KM182		04-3004
O-105(J-L), O-200		04-0116	DR-86, DR-86F		04-2003	KRA105,KSA120,35175		04-3005
O-105(M,N), O-230		04-0117	HT-02, KMI-81		04-2008	KSA85, KSA851		04-3004
O-120		04-0102	KRA-105		04-2002	KSA105, O-85(A-G)		04-3004
R-8, RSA-8		04-0108	ML(PRE E) (9"Wire)		04-2017	ML(H,I)		04-3006
R-10 (A-M), R-36, R-96, R-100		04-0107	ML(E-G) (14"Wire)		04-2018	O-85(I), RSA-850		04-3002
			ML(H,I) (9"Wire)		04-2021	O-105(A-H)		04-3004

IF YOU DO NOT LOCATE YOUR HEATER MODEL OR PART - PLEASE CALL FOR ADDITIONAL ASSISTANCE.
 TO PLACE AN ORDER - 1-800-233-3202 • TECHNICAL SERVICE - 1-814-643-2299 Page 11

SECTION 2: Kero-Sun and Similar Brands

Wick Adjuster cont'd		Wick Adjuster Knob cont'd		Wick Sleeve / Holder	
MODEL #	PART #O-	MODEL #	PART #	MODEL #	PART #
105(F-I) w/Stop	04-1036	DR-86, DR-86F	04-1703	35135	04-1202
O-105(J-L), O-200 w/o Knob	04-1005	EKS198C, HB1950	04-1710	DC-60, DC-80	04-1201
O-105(M,N), O-230(A-D)	04-1012	HT-02, KMI-81	04-1708	DC-90, DC-100, 35175	04-1301
R-36, R-36F, R-100	04-1025	KMI-82	04-1710	DR-86, DR-86F	04-1201
R-36(PRE D)	04-1037	KRA105, KSA120	04-1702	KRA105	04-1301
RB-2	04-1026	ML(H)	04-1709	KSA120	04-1311
RC-37, RC-37F	04-1025	O-85(A-H), 105(A-I)	04-1710	ML (PRE H), O-15	04-1302
RCA-36, 36F, RF-110	04-1025	O-85(I), O-105(J)	04-1703	ML(H)	04-1303
S13000 w/Stop	04-1032	O-105(K-M), O-120(B)	04-1709	O-85(I)	04-1201
S19500	04-1034	O-120A,200,230	04-1709	O-105(J-L), O-200	04-1301
SC-150, SC-150B	04-1003	R-8, 10(A-M), R-22	04-1708	O-105(M,N)	04-1311
SC400(A-D), SS-2	04-1011	R-10(N), RB(B,C)	04-1709	O-120, O-230	04-1311
1025SYK20000	04-1034	R-36(PRE D)	04-1706	R-10(N)	04-1201
TSC-15, S8700	04-1026	R-36(D-G), R-100	04-1707	R-40, R-101	04-1202
Wick Adjusters w/Pendulum Assembly		R-40(A-C), R-101(A-C)	04-1705	RAINBOW (B)	04-1303
500	04-1001	R-96, RC-11(B,C)	04-1708	RB-2, TSC-15	04-1302
DC-60, 80, 35135	04-1003	RB(B,C), RC-11(D,E)	04-1703	RC-11(D)	04-1201
DR-86, DR-86F	04-1004	RC-41(A-C),RC-41F(A-C)	04-1705	RC-41, RC-41F	04-1202
KRA105	04-1006	RCA-36,36F, 37,37F	04-1707	RCA-87, RSA-850	04-1201
ML(H,I) NLA-	04-1010	RCA-87	04-1701	RF-111, SS-2	04-1202
O-85(I)	04-1009	RF-110	04-1707	SC-150, SC-150B	04-1201
O-105(J-L), O-200 w/o Knob	04-1005	RF-111, SR400(A-D)	04-1705	SC-200, SC-200B	04-1301
O-105(M,N), O-230(A-D)	04-1012	RSA-8, RSA-10	04-1708	SO-230, WC-105R(E,F)	04-1311
O-120	04-1002	RSA-850	04-1702	WC-105, WC105R(C,D)	04-1301
R-40, R-10N,R-101, RF-111	04-1011	SC-150, 200, SO-230	04-1703	WC-120, WC-120R	04-1311
RB(B,C) NLA-	04-1010	SRT9600	04-1708		
RC-41, RC-41F	04-1011	SS-2	04-1705	Wire Coil	
RCA-87, SS-2	04-1011	Sunstream	04-1707	DIR	04-0203
SC-150, SC-150B	04-1003	WC-105, WC-105R(C-E)	04-1703	R-8, RSA-8, S8200	04-0204
SO-230(A-C)	04-1012	WC-120, WC-120R	04-1703	R-22	04-0202
WC-105 w/o Knob	04-1005	Wick Height Adj. Knob		All Others	04-0201
WC-105R(C,D) w/o Knob	04-1005	ML(H,I)	04-1793	Wire Net	
WC-105R(E,F)	04-1012	O-105(M,N), O-230(A-D)	04-1799	R-8, RSA-8, S8200	04-0301
Wick Adjuster Knob		R-10(N), R-40, R-101	04-1794	R-22	04-0302
100, 4570, BK-195	04-1710	RB(B,C)	04-1793	Miscellaneous Parts	
500	04-1701	RC-11(D-E), RC-41,41F	04-1794	Battery Holder Door	04-2415
2220, BK-96, Com96	04-1708	RF-111, SR-400, SS-2	04-1794	DIR	
35135, 35175	04-1703	SO-230, WC-105R(E-F)	04-1799	Burner Cover	04-0490
CM100	04-1707	All others requiring	04-1791	O-15, ML (PRE H), etc.	
DC-60, 80, 90, 100	04-1703			C-Clips (50/pack)	04-9210
DC-90(B)	04-1709			Cooking Rail	
DIR	04-1704			Model K	04-5755
				ML	04-5760

IF YOU DO NOT LOCATE YOUR HEATER MODEL OR PART - PLEASE CALL FOR ADDITIONAL ASSISTANCE.

TO PLACE AN ORDER - 1-800-233-3202 • TECHNICAL SERVICE - 1-814-643-2299 Page 13

SECTION 2: Kero-Sun and Similar Brands

Miscellaneous Parts cont'd

<u>MODEL #</u>	<u>PART #</u>
Cross Pins	04-0410
E-Rings (50/pack)	04-9101
Extinguisher Ring	
O-15, ML	04-0485
Fan Switch	04-2501
RCA-36F, SS, RF-110	
Flame Spreader	04-0480
O-15, ML (PRE H), etc.	
Fuel Acceptance Fitting	
Radiants (OEM#20450025)	04-4401
Newer Styles (OEM#20450425)	04-4402
Motor Assembly	04-6001
RCA-36F, SS, RF-110	
Power Cord	04-2601
RCA-36F, SS, RF-110	
Retainer/Screw (pair)	04-9602
O-105 Top Guard	
Retainer (all wick adj.)	04-9605
Screw (50/pack)	04-9601
O-105 Retainer	
Wick Hght Adj. Knob Spring	04-1743
Wick Adjuster Spring	04-9620
All requiring	
Wick Guide	04-0475
O-15, ML (PRE H), etc.	
Wingnuts (50/pack)	04-9401

PLEASE REFER TO OWNERS
MANUAL BEFORE ATTEMPTING
ANY REPAIR OR SERVICE.

TOTALLY COMPUTERIZED

From order entry to invoicing to shipping - World Marketing of America, Inc. is faster because of our totally automated system. We can tell you immediately your cost of the part or if the part is in-stock. World Marketing has maintained a 99.4% fill ratio for many years. Most orders are shipped within 48 hours, orders placed before 11 am E.S.T. usually ship that same day!

IF YOU DO NOT LOCATE YOUR HEATER MODEL OR PART - PLEASE CALL FOR ADDITIONAL ASSISTANCE.
Page 14 TO PLACE AN ORDER - 1-800-233-3202 • TECHNICAL SERVICE - 1-814-643-2299

www.worldmkting.com info@worldmkting.com